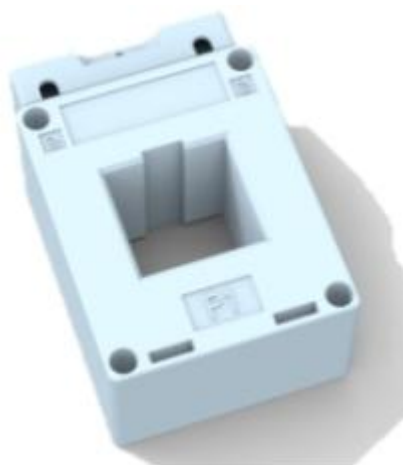


TR-SDH0.66-30



Products Features

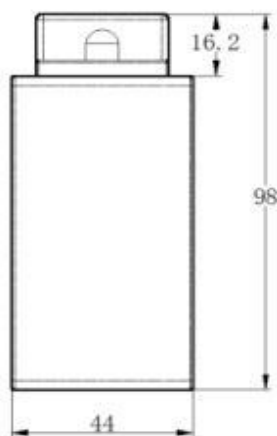
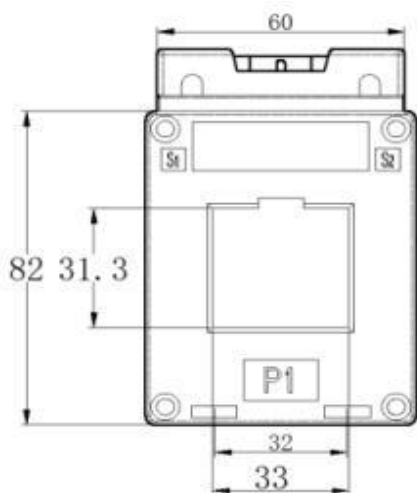
TR-BH and TR-SDH series current transformers have the characteristics of low price, high performance index, flexible installation mode and strong applicability, and can also be customized according to users' needs.

Application

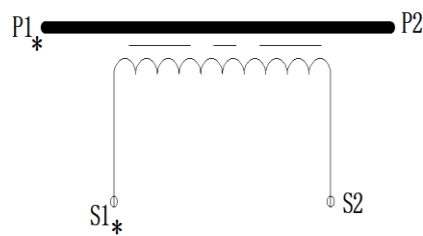
TR-BH and TR-SDH series current transformers are used in the protection test of GCS low-voltage draw-out switchgear, domino combined switchgear and high-power electrical equipment, and are suitable for AC circuits with rated voltage below 0.66kV.

Mechanical dimension

Dimension (mm)



Electrical schematic diagram





Technical data

Transformation Ratio	150/5(1)A	200/5(1)A	250/5(1)A	300/5(1)A	400/5(1)A
Rated Capacity(1.0 class)	2.5VA	2.5VA	5VA	5VA	5VA
Rated Capacity(0.5 class)	/	2VA	5VA	5VA	5VA
Rated Capacity(0.5S class)	/	/	2.5VA	5VA	5VA
Rated Capacity(0.2 class)	/	/	2.5VA	5VA	5VA
Rated Capacity(0.2S class)	/	/	2.5VA	5VA	5VA
Frequency	50Hz/60Hz				
Inner Diameter	31.3*32mm				
Tolerance	±2mm				
Power Frequency Withstand Voltage	3kV AC/1min				
Ambient Operating Temperature	-25°C~70°C				
Ambient Storage Temperature	-40°C~75°C				

Contact information

HUBEI TIANRUI ELECTRONIC CO.,LTD.

Add: No.8 Chuangye Road, Econommic Development Zone, Tianmen 431700, Hubei, China

Website: www.hbtrec.com

Email: export@hbtianrui.com