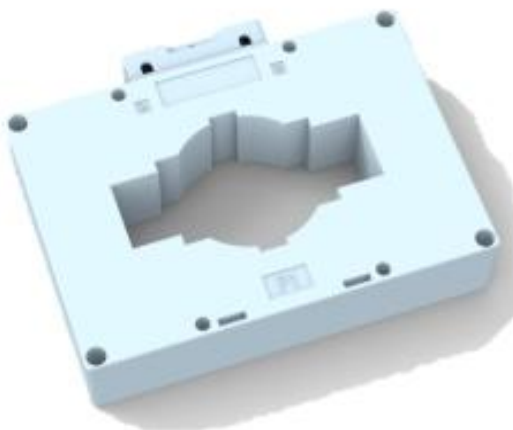


TR-BH0.66-100



Products Features

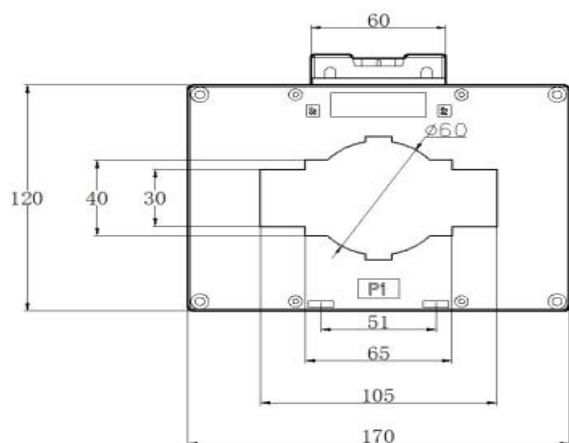
TR-BH and TR-SDH series current transformers have the characteristics of low price, high performance index, flexible installation mode and strong applicability, and can also be customized according to users' needs.

Application

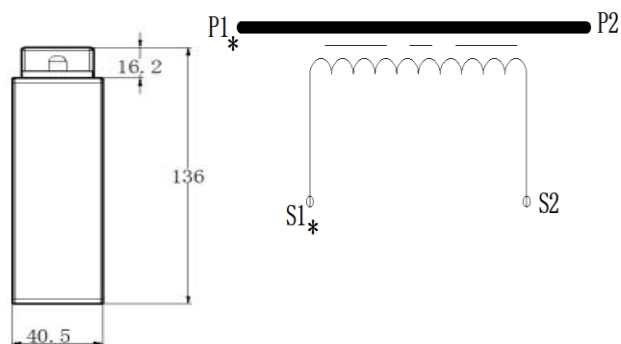
TR-BH and TR-SDH series current transformers are used in the protection test of GCS low-voltage draw-out switchgear, domino combined switchgear and high-power electrical equipment, and are suitable for AC circuits with rated voltage below 0.66kV.

Mechanical dimension

Dimension (mm)



Electrical schematic diagram





Technical data

| Transformation Ratio | 600/5(1)A | 800/5(1)A | 1000/5(1)A | 1500/5(1)A | 2000/5(1)A |
|-----------------------------------|-------------|-----------|------------|------------|------------|
| Rated Capacity(1.0 class) | 5VA | 10VA | 10VA | 10VA | 20VA |
| Rated Capacity(0.5 class) | 5VA | 10VA | 10VA | 10VA | 20VA |
| Rated Capacity(0.5S class) | 5VA | 10VA | 10VA | 10VA | 20VA |
| Rated Capacity(0.2 class) | 5VA | 10VA | 10VA | 10VA | 20VA |
| Rated Capacity(0.2S class) | 5VA | 10VA | 10VA | 10VA | 20VA |
| Frequency | 50Hz/60Hz | | | | |
| Inner Diameter | 60mm | | | | |
| Tolerance | ±2mm | | | | |
| Power Frequency Withstand Voltage | 3kV AC/1min | | | | |
| Ambient Operating Temperature | -25°C~70°C | | | | |
| Ambient Storage Temperature | -40°C~75°C | | | | |

Contact information

HUBEI TIANRUI ELECTRONIC CO.,LTD.

Add: No.8 Chuangye Road, Econommic Development Zone, Tianmen 431700, Hubei, China

Website: www.hbtrec.com

Email: export@hbtianrui.com