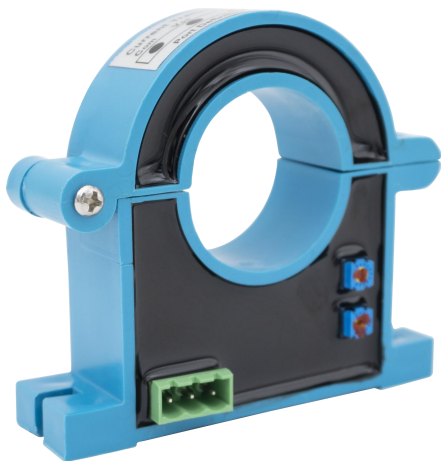


TR0258-LKH24

DC 2000A/DC 10V



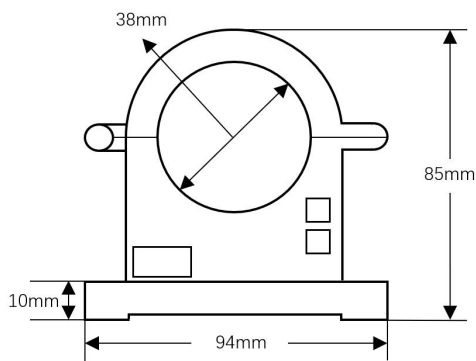
Products Features

- Best cost-performance ratio
- Low power consumption
- Compact and lightweight design
- Easy installation, no insertion loss

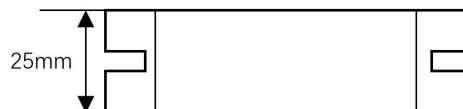
Applications

- Variable frequency drive systems
- Welding machine control
- Electrochemical applications
- Power supply monitoring

Mechanical Dimension(mm)

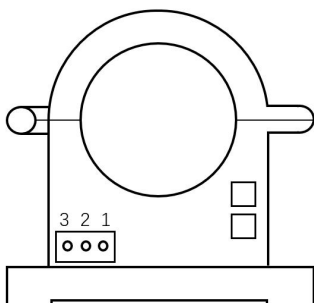


Front View



Top View

Terminal Definition Diagram



	Symbol	Description
1	+	Positive Power Supply
2	M	Secondary-side Signal Output
3	G	GND



Technical Data

@T_A=25°C,unless otherwise stated

Type		TR0258-LKH24
I_{PN}	Primary Rated Input Current	DC 2000A
I_P	Primary Current Measure Range	DC 0~2400A
V_{SN}	Secondary Rated Output Voltage	DC 10V
U_C	The Power Supply Voltage	DC 24V
R_L	Load Capacity	$R_L \leq 650\Omega$
ε_L	Linearity	0.5%
X	Accuracy	$\pm 0.5\%$
BW	Frequency Bandwidth	DC~20kHz
	di/dt Accurately Followed	$>50A/\mu s$
I_C	Current Consumption	$\leq 25mA$
U_d	Power Frequency Withstand Voltage	2.5kV AC/1min
t_r	Response Time	$<200ms$
I_0	Offset Current	$\leq 80\mu A$
	Temperature Drift	$\leq 500ppm/^{\circ}C$
T_A	Ambient Operating Temperature	-10°C~+70°C
T_S	Ambient Storage Temperature	-25°C~+85°C

Contact Information

HUBEI TIANRUI ELECTRONIC CO.,LTD.

Add: No.8 Chuangye Road, Economic Development Zone, Tianmen 431700, Hubei, China

Website:www.hbtrec.com

E-mail: export@hbtianrui.com